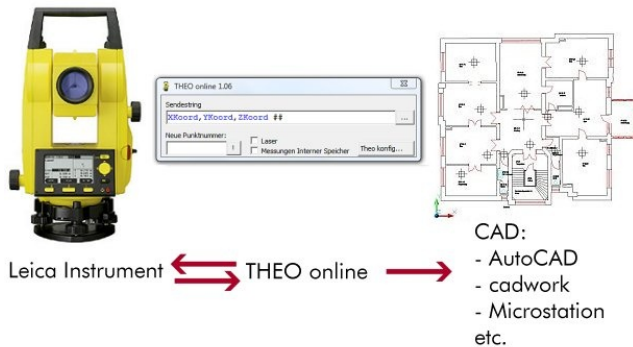


THEO online Overview

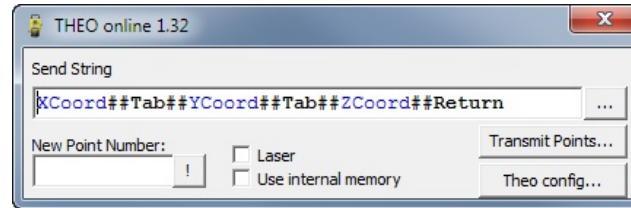
THEO online is a application to operate a Leica total station at any serial or Bluetooth port within a MS Windows 2000/NT/XP/Vista/7 (32 and 64 Bit) operated PC or Notebook computer. The Leica Theodolite measurements are automatically formatted to your needs and transmitted into any active window, input field etc. You can send each measurement of your Leica total station directly into any Windows or DOS program:



Features of THEO online

- Supports all Leica Total Stations with serial RS232 or Bluetooth interface
- The measurements could be sent to any windows program, even programs in the DOS box could receive measurements.
- For CAD applications the measurements are transmitted like normal user inputs: Therefore all drawing functions are supported.
- Various Remote Control functions for Total Stations: Laser on/off, loading of points lists, etc.

THEO online Program Window

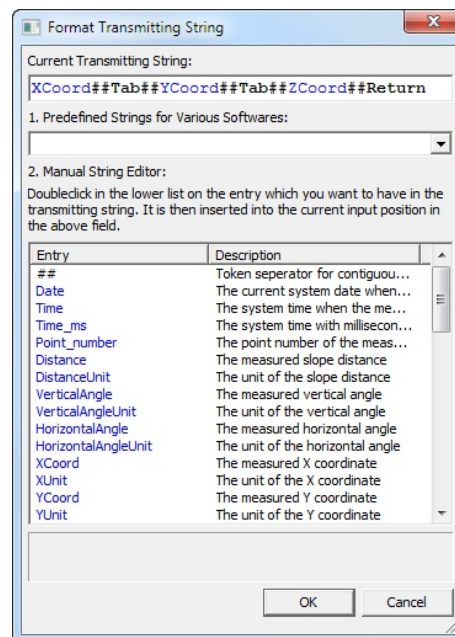


This window controls the communication with the Leica Total Station and other software. The central element is the Format string which defines the format who the measurements are sent to other applications

The Total Station could also remote controlled:

- Send a new point number for stationing points
- Switch Laser on/off.
- Store measurements in the instrument in order to be there for stationing.
- Load point files into the instrument.

Window „Format Transmitting String“

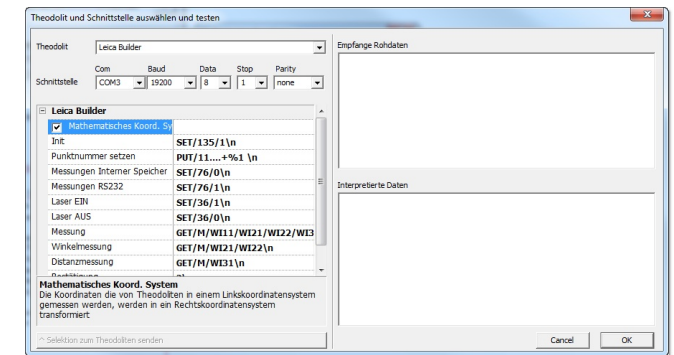


THEO online simulates normal keyboard input of a user. Therefore nearly all applications can be fed with measurements of a total station. The measurements can be formatted in virtually all possible ways, so that each application can benefit from THEO online.

Window „Select and Test Theodolite and Serial Port“

It's very easy to connect THEO online with total stations: Select the total station model and all communication parameters are set to the factory defaults. Then you choose the communication port which can be a real RS232 interface or a virtual USB or Bluetooth port.

You can also check the communication quite easily: You can send one of the predefined commands like "Laser on" to the instrument, and you can see very easily if the instrument responds to the command



Evaluation of THEO online

Evaluation is very easy: Just download THEO online from www.elcovision.com and request an unlock code from within the software. We will send you a free unlock code which is valid for 2 workdays. If you have any questions we will gladly answer them by email or by phone.